



NIL SATIS NISI OPTIMUM

CONTENTS



Who we are  
Ποιοί είμαστε

2



Our Scope of Operations  
Το φάσμα των εργασιών μας

4



Projects and Case Studies  
Έργα

6



Safety Awareness  
Ευαισθητοποίηση στην ασφάλεια

8



Equipment and Tools  
Εξοπλισμός και εργαλεία

10



Customer Comes First  
Ο πελάτης έρχεται πρώτος

14



Managing Director Message  
Μήνυμα Γενικού Διευθυντή

16



Primary offices and equipment site



Secondary equipment site



## Who we are ΠΟΙΟΙ ΕΙΜΑΣΤΕ

A.P. Scaffolding Solutions Ltd is a company based in Cyprus working within the island and also overseas that provides scaffolding contracting services.

Our aim is always to provide the best and safest access solutions to our customers. We work hard by designing and considering all aspects in respect of time, value and deadlines. Our prompt response, efficient service, fully trained and equipped staff together with high quality scaffolding equipment can meet up to any project demands and expectations. We have accomplished all these by maintaining an upgraded yard, which has all the latest facilities and machinery, i.e., forklifts and lorry vans.

We have exceeded in building a large customer base

and faultless reputation within the building trade, industrial and offshore oil and gas sector. Certainly all of these could not have been achieved without the professionalism of both our office and operations staff. Our scaffolding teams are fully trained both overseas and within our company and they work as part of a close-knit team. We always ensure our staff are up to date with ongoing scaffolder's training and that our scaffolding teams are fully equipped with their safety equipment. We urge and motivate our staff to deliver the best service possible with the best conduct, and as we say in Scaffolding Solutions "Nil satis nisi optimum", we are not satisfied unless it is the best.

Η A.P.Scaffolding Solutions Ltd είναι μια εταιρεία που δημιουργήθηκε για να προσφέρει υπηρεσίες ενοικίασης και τοποθέτησης σκαλωσιών.

Κατά τη διάρκεια της ζωής της εταιρίας έχουμε καθιερωθεί στο χώρο λόγω της συνέπειας και του επαγγελματισμού μας.

Σε μια προσπάθεια για όσο το δυνατό καλύτερη εξυπηρέτηση εξοπλιζόμαστε συνεχώς με τα καλύτερα συστήματα σκαλωσιών, PERI UP Flex.

Όσον αφορά την εκπαίδευση του προσωπικού μας, αυτή είναι συνεχιζόμενη και με τα καλύτερα πρότυπα (CITB).





VTTV JETTY



OIL RIG



FUEL TERMINAL



THEATER & EVENTS STAGES



STORAGE TANK



SHIP



CONSTRUCTION SITE



CONSTRUCTION SITE



CHURCH



## Our scope of operations

### ΤΟ ΦΑΣΜΑ ΤΩΝ ΕΡΓΑΣΙΩΝ ΜΑΣ

Scaffolding Solutions is able to undertake access - scaffolding projects in the following fields:

- Power Stations
- Submarine bases
- Refineries
- Marine shipping yards
- Oil and gas drilling platforms
- Civil and construction sites
- Events

Η Scaffolding Solutions είναι σε θέση να αναλάβει και να δώσει λύσεις πρόσβασης στον τομέα των σκαλωσιών στους παρακάτω τομείς:

- Ηλεκτροπαραγωγικούς σταθμούς
- Διυλιστήρια
- Υπεράκτιες πλατφόρμες εξόρυξης πετρελαίου και φυσικού αερίου
- Ναυπηγεία πλοίων
- Εργοτάξια
- Εκδηλώσεις

Based in Cyprus, we are in a position to provide services in the wider Mediterranean and Europe area.

Whether on land or at sea, on boats and platforms, at heights or underground areas, we are always ready and able to meet your access demands.

Με βάση την Κύπρο, η εταιρεία μπορεί εύκολα να εκτελέσει έργα στην Μεσόγειο και Ευρύτερη Ευρώπη.

Σε οποιαδήποτε περιοχή, σε ξηρά και θάλασσα, πλοία και πλατφόρμες, σε ύψος και υπόγειους χώρους είμαστε πάντα έτοιμοι να ικανοποιήσουμε τις ανάγκες πρόσβασης σας.





**VTTV JETTY & FUEL TERMINAL**  
**Project Name:** VTTV Terminal  
**Client:** GIR.OIL Enterprises Ltd  
**Area:** Vassilikos, Zygi area  
**Size:** 4300 sq.m.



**VTTV TANKS MAINTENANCE**  
**Client:** VTT Vasiliko Ltd  
**Area:** Port of Vasilikos

The maintenance of tanks containing different types of petroleum products (e.g. gasoline, diesel) is a specialized work that has particular difficulties and for this reason requires great care and precision. Our company is fully aware of the Health & Safety demands for these kinds of projects. Therefore, we proposed to the client to construct a movable scaffold inside the tank. The scaffolding was placed on rubber wheels so that it could move cyclically around the tank without of course scalping the floor surface.



**SHIP REFURBISHMENT**  
**Client:** EDT Offshore Ltd  
**Area:** Limassol Port

Scaffolding Solutions has the experience to provide services in the area of shipping. In this case, we were asked to erect a scaffold around the smokestack of the ship. The ultimate objective was to provide access to personnel who were engaged in the maintenance of the smokestack. The scaffolding was entirely erected with PERI system.



**KARYATIDES BUSINESS CENTRE - KBC**  
**Client:** Karyatides Developments Ltd  
**Area:** Strovolos  
**Size:** 3000 m<sup>2</sup>

KBC is an imposing building with unique design in a central area of the capital. Our company using a combination of two scaffolding systems erected a scaffolding around the building with loading platforms and extensions at various levels and also an external staircase. In addition, we were asked to erect mobile scaffolding towers inside the building and this was done very easily by using BOSS aluminum scaffolding.



**VASILIKOS POWER STATION**  
**Client:** EAC  
**Area:** Vasilikos  
**Size:** 50000 qm<sup>3</sup>

Scaffolding erection for several contractors to assist the reinstating of the Vasilikos power station. The project was demanding and we had to work under pressure and long hours in order to accommodate our various customers. There were time limits set and extensive works held by all contractors. We gave solutions to access difficult areas utilizing a large amount of our scaffolding in the particular project and many times found ourselves working 24/7.



**WARGAMING GLOBAL HQ**  
**Client:** Wargaming.net  
**Area:** Nicosia

It was requested by the contractor of the building to erect scaffolding all around the building to enable them to execute their works. Our company took into account the height, design and complexity of the building and came up with the best and most cost effective solution. The works were completed using Tube and Fitting and Cuplock systems.



## Projects and case studies

### ΕΡΓΑ ΜΑΣ

In the course of our work we have undertaken a lot of large scale, prestigious and challenging projects. In every case we have delivered a well thought out and successful access solution according to each project's requirements.

Κατά τη διάρκεια της λειτουργίας μας αναλάβαμε πολλά έργα μεγάλης κλίμακας, κύρους ή ιδιαίτερης δυσκολίας. Σε κάθε περίπτωση έχουμε παραδώσει μια καλά μελετημένη και επιτυχημένη λύση πρόσβασης σύμφωνα με τις απαιτήσεις κάθε έργου.



## Health And Safety Policy Statement

### Our Goal: "No One Gets Hurt"

*The Management of Scaffolding Solutions is committed to the health and safety of its employees and for all who are involved in our projects. Protection of employees from injury or occupational disease is a major continuing objective. We are committed to continuing improvement towards an accident-free workplace through effective administration, education and training. All supervisors and workers must be dedicated to the continuing objectives of eliminating the "near misses" which will greatly reduce the risk of injuries.*

*Our philosophy is that the well-being of our company and clients is dependent on the health and safety of our workforce. The Directors and Officers of this corporation promise that every precaution reasonable in all circumstances will be taken for the protection of all workers. No job is to be regarded so urgent that time cannot be taken to do it in a safe manner. The welfare of the individual is our greatest concern.*

*Supervisors will be responsible for the health and safety of workers under their supervision. Supervisors are responsible to ensure that machinery and equipment required for use by each worker are safe and that each worker works in compliance with established safe work practices and procedures for each piece of equipment. Workers must receive adequate training in their specific work tasks to protect their health and safety.*

*All supervisors, employees and subcontractors must protect their own and fellow workers' health and safety by working in compliance with the Occupational Health and Safety Act and all applicable regulations and safe work practices and procedures established by our company.*

*We recognize that a safe work environment can be established and sustained only through a united effort by all employees and subcontractors and that the assistance of each person is required. Your attitude and cooperation in promoting accident prevention will assist in achieving our goal: "no one gets hurt" and make our company the best place to work, one where employees share in corporate growth and success.*

*Everyone from the Director to new workers has the responsibility to ensure a safe and healthy workplace. Let's all work together to prevent incidents from creating unwanted losses and personal injuries or illnesses.*

Andreas Polydorou  
Director



## Safety Awareness

### ΕΥΑΙΣΘΗΤΟΠΟΙΗΣΗ ΣΤΗΝ ΑΣΦΑΛΕΙΑ

Safety is of paramount importance to us and our clients. We encourage a pro-active commitment to Health and safety at all levels and an intolerance of behavior and work practices that increase the risk of accidents and damage to health.

We share our health and safety information and expertise along with our customers and work with customers to improve all round Health and Safety performances. As part of this we have implemented a complete H.S.E. management system.

Η A.P. Scaffolding Solutions είναι η μεγαλύτερη εταιρεία στην Κύπρο στο τομέα τοποθέτησης και ενοικίασης σκαλωσιών. Στην διεύθυνση της εταιρείας μας έχουμε άτομα με 40 χρόνια εμπειρίας στην ανέγερση σκαλωσιών, οι οποίοι μπορούν άμεσα να δώσουν λύσεις σε προσβάσεις ακόμη και στις πιο απαιτητικές και δύσκολες περιστάσεις.

Το προσωπικό της εταιρείας είναι εκπαιδευμένο σε διεθνή πρότυπα και μπορούμε να αναλάβουμε οποιοδήποτε σε μέγεθος και βαθμό δυσκολίας έργο, τόσο εντός όσο και εκτός Κύπρου.

## CARE FOR THE ENVIRONMENT Ευαισθητοποίηση στο περιβάλλον

At Scaffolding Solutions we also take great care of the surrounding environment, finding non-destructive solutions to work around trees, branches and other natural obstacles.

Στην εταιρεία μας λαμβάνουμε επίσης ιδιαίτερη φροντίδα και στο περιβάλλον, βρίσκοντας λύσεις πρόσβασης γύρω από υφιστάμενα δέντρα και κλαδιά χωρίς να τα καταστρέφουμε.



## • Scaffold Tube

Galvanised Scaffold Tube - Aluminium Scaffold Tube - High Yield Scaffold Tube



## • Scaffold Boards

BSI 1.2m - Fire Proof Scaffold Boards - Kiln Dried Scaffold Boards - Plastic Battens - Plastic Scaffold Boards - Laminated Scaffold Boards - Sole Boards (Timber)



## • Scaffold Fittings

Doubles - Swivels - Ladder Clamps - Singles - Joints - Girder Coupler - Roofing Coupler - Left Right Board Retainer - Base Plate - Pressed Sleeve - Tube Clamps



## • System Scaffold

### PERI UP Flex Facade Scaffolding

PERI UP Flex Modular Scaffolding can be used for realizing robust, high load-bearing facade scaffolds. The decking is mounted directly on the ledgers while the bay lengths are adjustable in 25 cm increments. Connecting other system components to the standards is possible using 50 cm node spacings. The integrated lock against lifting along with the Gravity Lock for the ledgers accelerate assembly operations. Optionally, the ledgers are mounted in advance from a safe position.

Extremely adaptable. Adjustments are carried out in a uniform grid arrangement of 25 cm which provides a high level of flexibility for complex facade scaffolding. Gap-free decking levels and a high load-bearing capacity.



## • Temporary Roofing Systems

### Ubix Temporary Roofing System

UBIX is the Class leading temporary roofing system. In service over a period of 14 years, UBIX has proven itself again and again as being the first choice temporary roof system for many experienced scaffold companies.

This excellent temporary roof system is based on kader sheet covering, quick and simple to erect using a small number of standard components which enables the client to achieve maximum weather protection in a quick, safe and economical method.

The Ubix temporary roof system has the capabilities to span up to 40 metres using standard beam configurations and even larger structures and spans can be achieved with bespoke designed equipment.



## • Beams

Aluminium - Steel Ladder Beams - X Beam



# Equipment and tools ΕΞΟΠΛΙΣΜΟΣ ΚΑΙ ΕΡΓΑΛΕΙΑ

Our aim is to serve our clients with the safest and most innovative method of scaffoldings and access solutions in the Cypriot market.

Σκοπός μας είναι η εξυπηρέτηση των πελατών μας όσον αφορά την ασφαλέστερη και απλούστερη ανέγερση σκαλωσιών για τις εργασίες που διεξάγουν.

- PERI UP Flex Scaffolding Systems **PERI**
- CombiSafe Edge Protection Systems **COMBISAFE**
- Rabid Edge Protection System **RAPID-EPS**
- Aluminium Towers **YOUNGMAN**
- Tube and Fitting system
- Uniscaff staircases
- Ubix Temporary Roofing System **UBIX®**

## • Combisafe

### Combisafe Prevention

SMB S System - SMB C System - Net Barrier System, **Combisafe Protection** Safety Net Fan - Alsipercha - Loading System - Personal Protective System



## • Staircases

### PERI UP Flex Stair 75

The lightweight aluminium flights of stairs with 75 cm widths are mounted on ledgers of the PERI UP modular scaffolding. This results in 4-legged stair towers with alternating staircase units or staircase units in the same direction with heights of up to 100 m. The PERI UP Flex Stair 75 is designed to accommodate 2.00 kN/m<sup>2</sup> loads and serves as access to working areas or construction sites. Flexible assembly through the 25 cm grid dimension. All bays can be completely closed even in the smallest of spaces. Easily adapted for accessing building openings with brackets and small flights of stairs – regardless of storey heights



## • Safety Equipment

Loading Bay - Ladder Safety Hatch - Self Closing Ladder Safety Gate

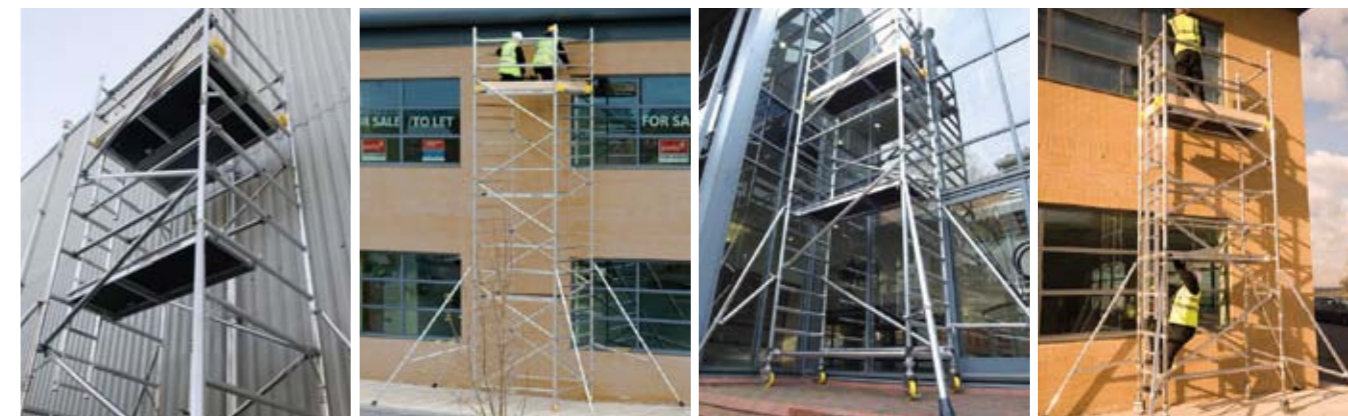


## • Temporary Fencing, Hoarding, Barriers



## • Access Towers

BoSS Evolution - BoSS Clima - BoSS Ladderspan - BoSS Zone 1



## • Access And Work Platforms

P2000 Podium - P1500 Podium - P1000 Podium



## • RAPID EPS Edge Protection System

The RAPID EPS system, with its revolutionary RAPID Post, delivers quickly assembled edge protection for construction workers at standard height and full height, with only minimal training.



Equipment and tools  
ΕΞΟΠΛΙΣΜΟΣ ΚΑΙ ΕΡΓΑΛΕΙΑ



and many, many more...



## Customer comes first

Ο ΠΕΛΑΤΗΣ ΕΡΧΕΤΑΙ ΠΡΩΤΟΣ

Your concerns, difficulties and demands for access and safety features come first in Scaffolding Solutions Ltd.

We put in all of our expertise, knowledge and cost efficiency to provide a service which will meet your demands concerning costs, time limits and safety very seriously.

Εσείς είστε το επίκεντρο της προσοχής μας. Βάσει των απαιτήσεων σας σχετικά με προσβάσεις σκαλωσιών, σας προσφέρουμε την καλύτερη λύση λαμβάνοντας υπόψη την ασφάλεια, το κόστος και τα χρονοδιαγράμματα παράδοσης.

Είμαστε πάντοτε στην διάθεση και στο πλευρό σας για την επίτευξη και την επίλυση των απαιτήσεων σας, έχοντας πάντοτε σαν προτεραιότητα την ασφάλεια σας.

### Testimonials

*"Ικανότητα διαχείρισης εργασιών, άμεση εξυπηρέτηση, ποιότητα εργασίας, άριστα καταρτισμένο προσωπικό και συμμόρφωση εργασιών ανάλογα με τις απαιτήσεις του εκάστοτε έργου."*

Αρτέμης Ιακώβου, Διευθύνων Σύμβουλος  
ZEMCO CONSTRUCTION LTD

*"Scaffolding Solutions has allowed us to take our stage and installation designs to a level that exceeds expectations. Through their sophisticated systems, the desire to innovate, and professionalism at all stages of consultation, construction and dismantling, an environment has been created where anything is possible. Health and safety are never compromised which is of utmost importance for our events."*

Constantinos Kyprianou & Martha Georgiou,  
Founders at ABR - Alternative Brains Rule

*"Quality products paralleled with excellent service, A.P. Scaffolding Solutions is an ideal partner for scaffolding requirements. With their extensive experience in this field, readily available stock and professional team, they are in a position to offer complete solutions for projects. We would continue our good cooperation with them, and highly recommend them to other clients."*

Vasos Demetriades, CEO Demetriades Group

*"Η Διεύθυνση και το προσωπικό της Hellenic Technical Enterprises LTD, εκφράζουν τις ευχαριστίες και την ικανοποίησή τους για την άψογη συνεργασία που υπάρχει με την εταιρεία σας και σας διαβεβαιώνουμε ότι αυτή η συνεργασία θα συνεχιστεί. Τα προϊόντα της εταιρείας σας τα οποία χρησιμοποιούμε ικανοποιούν πλήρως τις ανάγκες μας, ενώ το προσωπικό σας είναι πάντοτε πρόθυμο να μας εξυπηρετήσει."*

Hellenic Technical Enterprises Ltd

*"Η LOIS Builders θέλει να εκφράσει τις ευχαριστίες προς την εταιρεία Scaffolding Solutions για την άψογη μέχρι τώρα συνεργασία μας. Η τεχνογνωσία της εταιρείας και το άρτια καταρτισμένο προσωπικό της, την καθιστούν ιδανική επιλογή για την αποπεράτωση έργων υψηλών προδιαγραφών, έχοντας πάντα ως γνώμονα την ασφάλεια αλλά και τον επαγγελματισμό."*

LOIS Builders Ltd

*"Σας ευχαριστώ θερμά για τη συμβολή σας στην επιτυχή διοργάνωση της εκδήλωσης του Κλάδου Λευκωσίας του Κυπριακού Ερυθρού Σταυρού. Η βοήθεια που μας παρείχατε ήταν ιδιαίτερα σημαντική, συμβάλλοντας έτσι στην επιτυχία της εκδήλωσης μας."*

Μαρίνα Δημάδη, Πρόεδρος Κλάδου Λευκωσίας  
Κυπριακός Ερυθρός Σταυρός

*"Professional, most efficient and reliable. Highly recommended!"* Karyatides Developments Ltd



## Managing Director Message

ΜΗΝΥΜΑ ΓΕΝΙΚΟΥ ΔΙΕΥΘΥΝΤΗ

Over the years, Scaffolding Solutions Ltd has proven its ongoing versatility by expanding the company within various fields, both within Cyprus and overseas.

Our operations have flourished over time, by gaining the trust and confidence of our esteemed clientele thus creating an ongoing long-term cooperation.

All projects, even the smallest, matter to us and we always bind ourselves to provide access solutions in the safest and most efficient way for our customers.

Our aim is to always provide better quality and faster service allowing us to improve and expand for a greater variety of services

In the last year we have invested and relocated to our new premises, allowing us for a better organized daily schedule and a broader clientele coverage, due to closeness to the main highway.

Our greatest achievement has been in investing in the PERI-UP Flex scaffolding, which I believe is the

best available system within the marketplace. On a continuation to this we have also dedicated and furthermore invested in training facilities. All our production teams have been fully trained in the usage of the scaffolding system we use and all safety features that should followed within a construction site.

It is also within our target to furthermore enlarge our services and invest in Formwork within the forthcoming year.

We would like to express our utmost gratitude to our associates and customers and we commit ourselves to continue providing the best quality of service for all your access needs 24/7.

Andreas Polydorou  
Managing Director



# Scaffolding Solutions



THE SCAFFOLDING SPECIALISTS  
OFFSHORE & ONSHORE

**A.P. SCAFFOLDING SOLUTIONS LTD**

**Head office:** Tseriou 47,  
2572 Pera Chorio Nisou,  
Nicosia, Cyprus

**Postal Address:** P.O.Box 19019,  
2643 Ergates, Nicosia, Cyprus

**Tel:** +357 22 621072  
**Mob:** + 357 99 224567  
**(Emergency)** + 357 99 776077  
**Fax:** +357 22 622038

**email:** [info@scaffolding-solutions.com.cy](mailto:info@scaffolding-solutions.com.cy)  
**[www.scaffolding-solutions.com.cy](http://www.scaffolding-solutions.com.cy)**  
**f Scaffolding Solutions Ltd**

